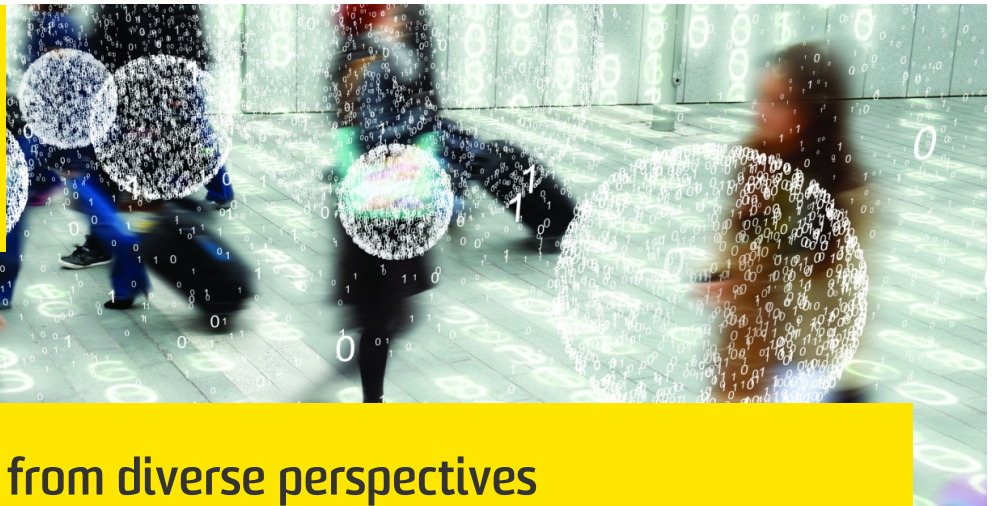




UNSW
SYDNEY



Trust and Optimism from diverse perspectives

Work on epistemology (the theory of knowledge) and people's relationships to each other and theories in real-world situations.

Competitive advantage

- Expertise at bringing together scientific, philosophical and historical perspectives to facilitate trusted relationships, particularly with new technologies in times of change
- Expertise in facilitating trusted relationships, particularly with new technologies in times of change

Impact

- Provide unique insights into how AI and Big Data techniques are changing the way knowledge is understood, and the unconsidered risks that are involved

Successful applications

- Keynotes and workshops to conferences and seminars in philosophy, medicine, science
- Leading an interdisciplinary research team exploring the impact of Big Data techniques on science and their many consequences

Capabilities and resources

- Team of trans-disciplinary researchers to engage on collaborative projects

Our partners

- Insurance Sector
- Technology sector
- Government

More Information

Associate Professor Michaelis S. Michael

Humanities and Languages
(Philosophy)

T: +61 2 9385 2183

E: m.michael@unsw.edu.au

UNSW Knowledge Exchange

knowledge.exchange@unsw.edu.au

www.capabilities.unsw.edu.au

+61(2) 9385 5008