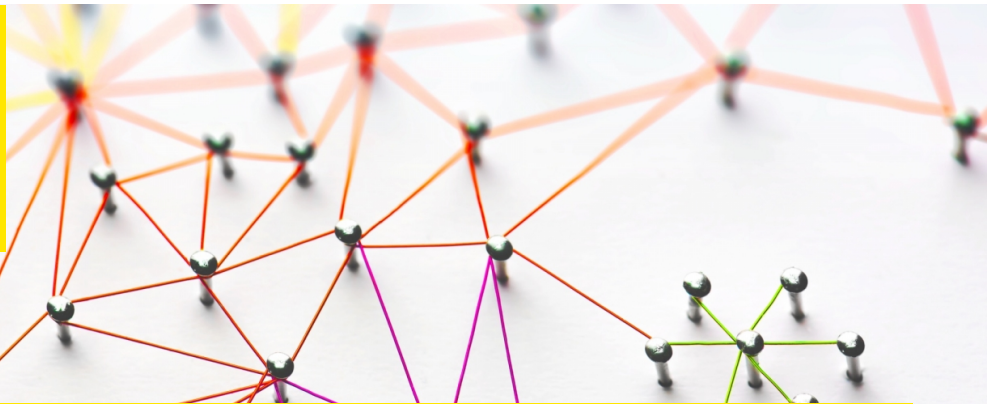




UNSW
SYDNEY



Big Data Analytics

Applying advanced analytics to big data—including the millions of records generated routinely by health services, clinical data captured at the point-of-care, and data generated by the population at large through technologies such as wearable devices and social media—in order to enhance health and wellbeing.

Competitive advantage

- Internationally recognised expertise across the following capability areas:
- Data science, data analytics, biostatistics, epidemiology and bioinformatics
- Ethical, legal and policy frameworks relevant to using health big data
- Secure management, sharing, curation and stewardship of health big data
- Developing and delivering training in health data analytics
- Communicating complex research findings through multiple modalities, including data visualisation, technical reports, plain-English briefings, multimedia products and social media

Impact

Bringing together researchers, consumers, clinicians, industry and government to frame relevant research questions, generate research designs that apply to real-world contexts, and commit to implementing the research and its findings.

Successful outcomes

- Analysis of Healthdirect telephone helpline records, to identify whether people followed advice and the outcomes
- Analysis of In-Vitro Fertilisation (IVF) treatment data to determine chances of success
- Analysis of data for NSW children showing a later school start has clear developmental benefits

Capabilities and facilities

E-Research Institutional Cloud Architecture (ERICA) secure cloud-based platform for research using sensitive microdata.

Our partners

- Australian Commission on Safety and Quality in Health Care
- Australian Government Department of Health
- Department of Veteran's Affairs
- Healthdirect Australia
- Australian Institute of Health and Welfare
- NSW Ministry of Health
- Department of Health and Human Services Victoria

More Information

Professor Louisa Jorm

Centre for Big Data Research in Health

T: +61 (0) 419 489 086

E: l.jorm@unsw.edu.au

UNSW Knowledge Exchange

knowledge.exchange@unsw.edu.au

www.capabilities.unsw.edu.au

+61 (2) 9385 5008

- New Zealand Ministry of Health
- NPS MedicineWise
- Prospection Pty Ltd
- Janssen Pty Ltd